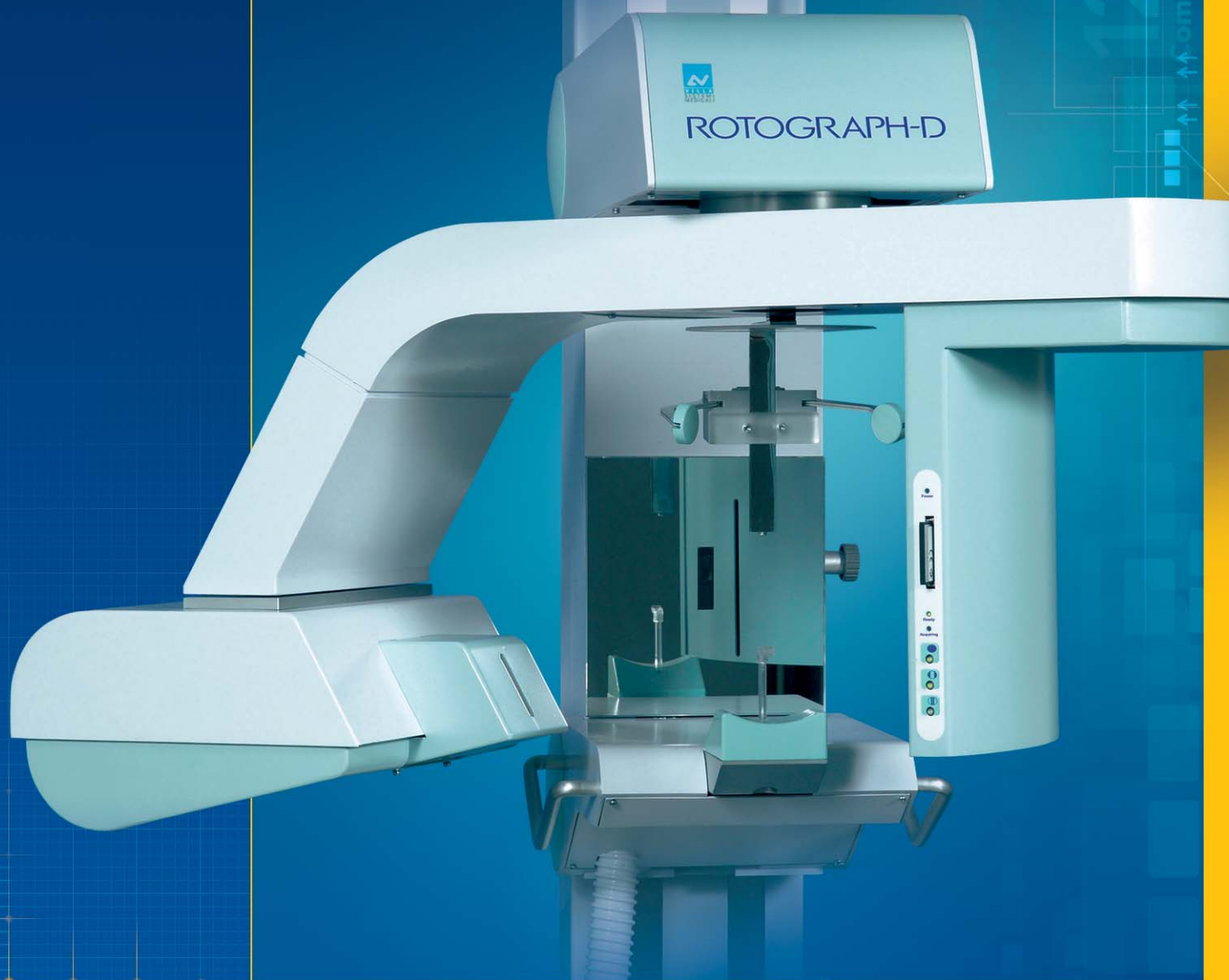




VILLA
SISTEMI
MEDICALI

DENTAL
LINE

A N A L O G I C B I G I T A L

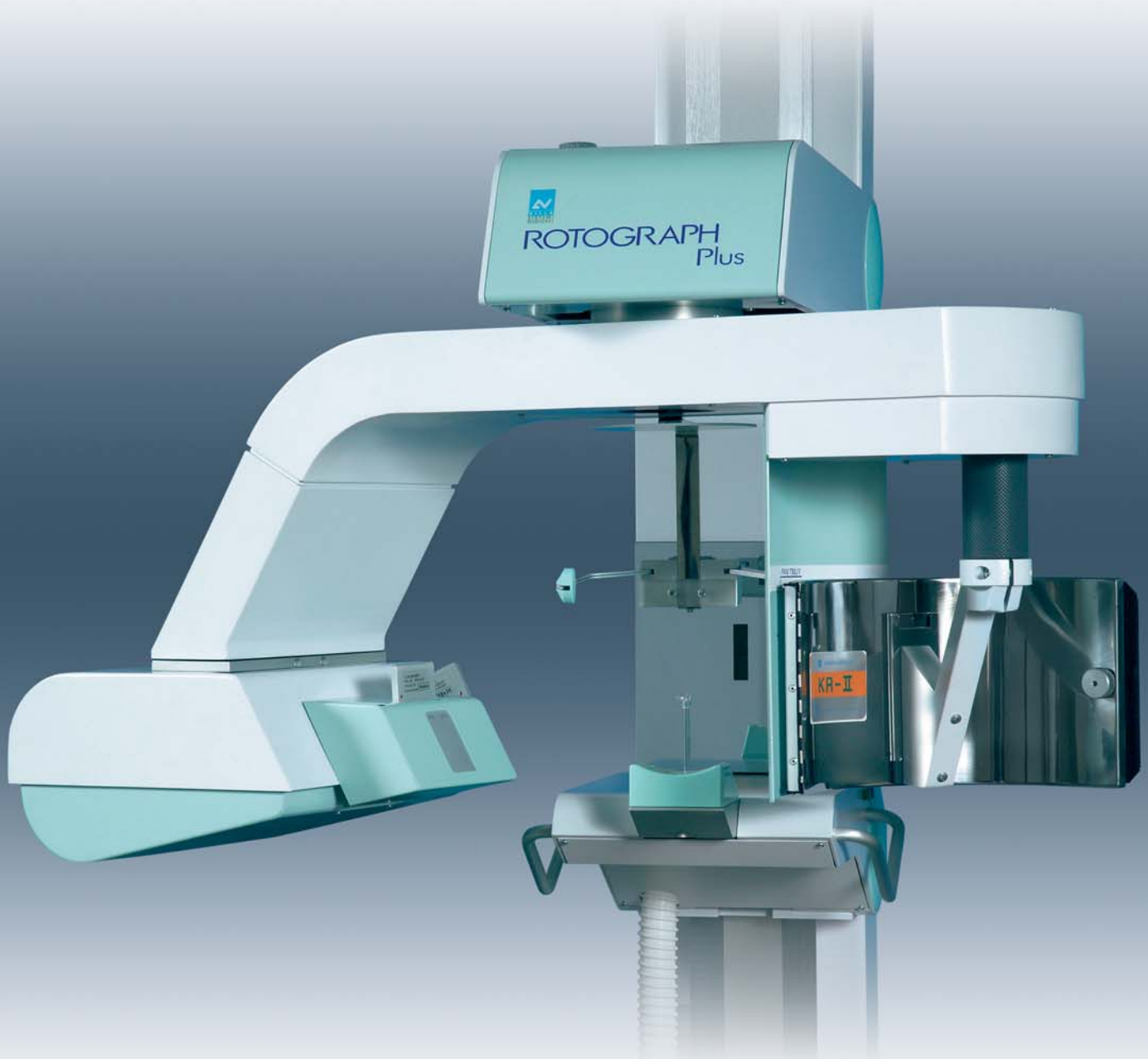


ROTOGRAPH Plus
ROTOGRAPH-D

Dental Panoramic System

ROTOGRAPH Plus

The best possible choice



The Rotograph is a panoramic unit designed to satisfy the X-ray imaging needs and requirements of specialists operating in the dental field.

Image Quality

Clear and sharp images are what we provide to ensure accurate diagnosis for your patients.

User friendly

A few easy steps are enough to obtain high quality radiographic images, without unnecessary complications.

Value for money

Rotograph employs consolidated technologies and European-Standard production processes that guarantee an excellent price/performance ratio.

Reliability

Thousands of satisfied users can confirm the constant high level performance and reliability of the Rotograph, as a long term safeguard of your investment.

ROTOGRAPH-D

The world is digital

Rotograph easily carries you into the digital panoramic imaging world with an affordable and rapidly recoverable investment.

Reduced operating costs

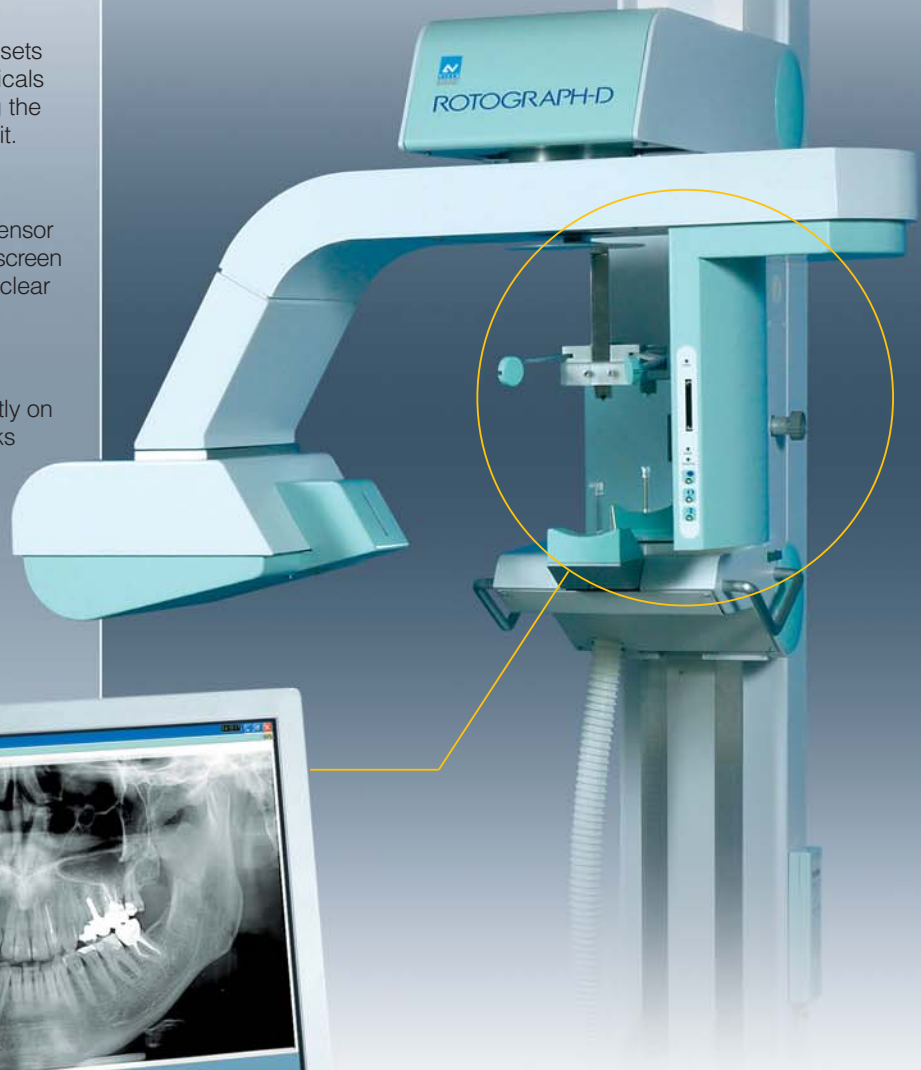
The Rotograph-D digital technology sets you free from films, cassettes, chemicals and all related expenses, minimizing the operating costs of the panoramic unit.

High resolution

The core of Rotograph-D is a CCD sensor with a CsI (Cesium Iodide) scintillator screen providing high resolution, sharp and clear images of even the finest details.

Double storage

Rotograph-D can store images directly on CompactFlash® memory cards thanks to the appropriate onboard slot, or can transfer them directly to your PC in real time through the provided USB 2.0 connection.



ROTOGRAPH Plus



Functions are selected on a compact hand-held remote control, showing all pertinent information in clear text messages. Setting of the exposure parameters can be done in manual mode or with preset anatomic programs according to patient type (adult or child) and size.

Rotograph Plus provides for features that guarantee the maximum diagnostic content in every condition of use.

The X-ray tube with small size focal spot ensures high image quality, in particular for the definition of fine details. The modulation of the cassette movement speed eliminates artifacts due to the cervical spine shadow. The automatic mains voltage compensation ensures a correct and constant darkening of the film.

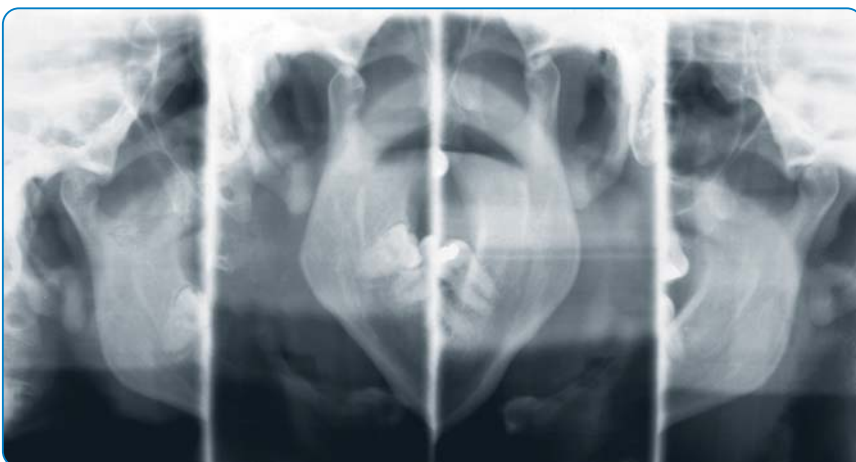
Patient positioning

Correct patient positioning is the key factor for good panoramic radiography. The perfect centering of the patient is obtained with a three point support system: i.e. chin support, bite block and temple clamps. The alignment is ensured by the crosshair positioning light that allows to precisely indicate the sagittal and Frankfurt planes.

Applications

With Rotograph Plus you can perform the most frequent exams in the dental practice, such as panoramic, both with adult and child reduced dose programs, temporo-mandibular joint with open and closed mouth and the maxillary sinus.

The panoramic exam employs an optimized trajectory and a wide focal layer to exactly follow the shape of the arch and ensure high quality images with every patient.



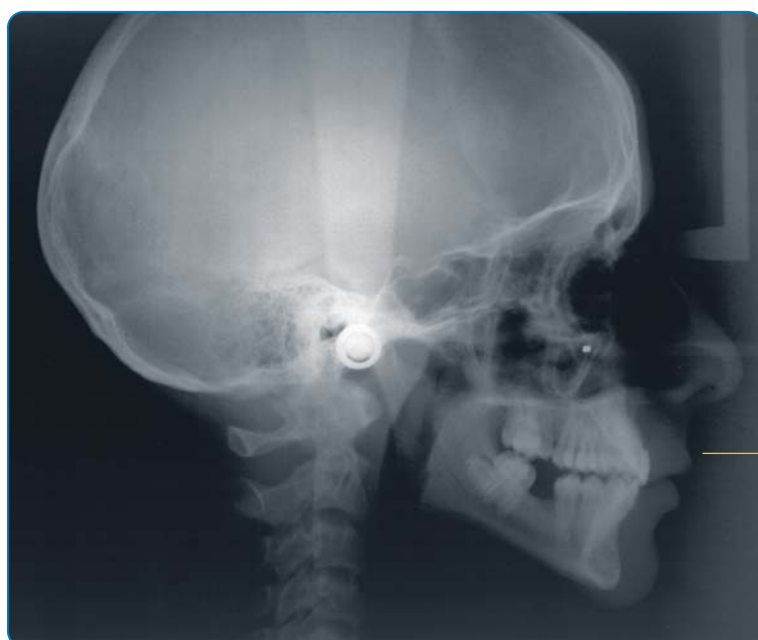
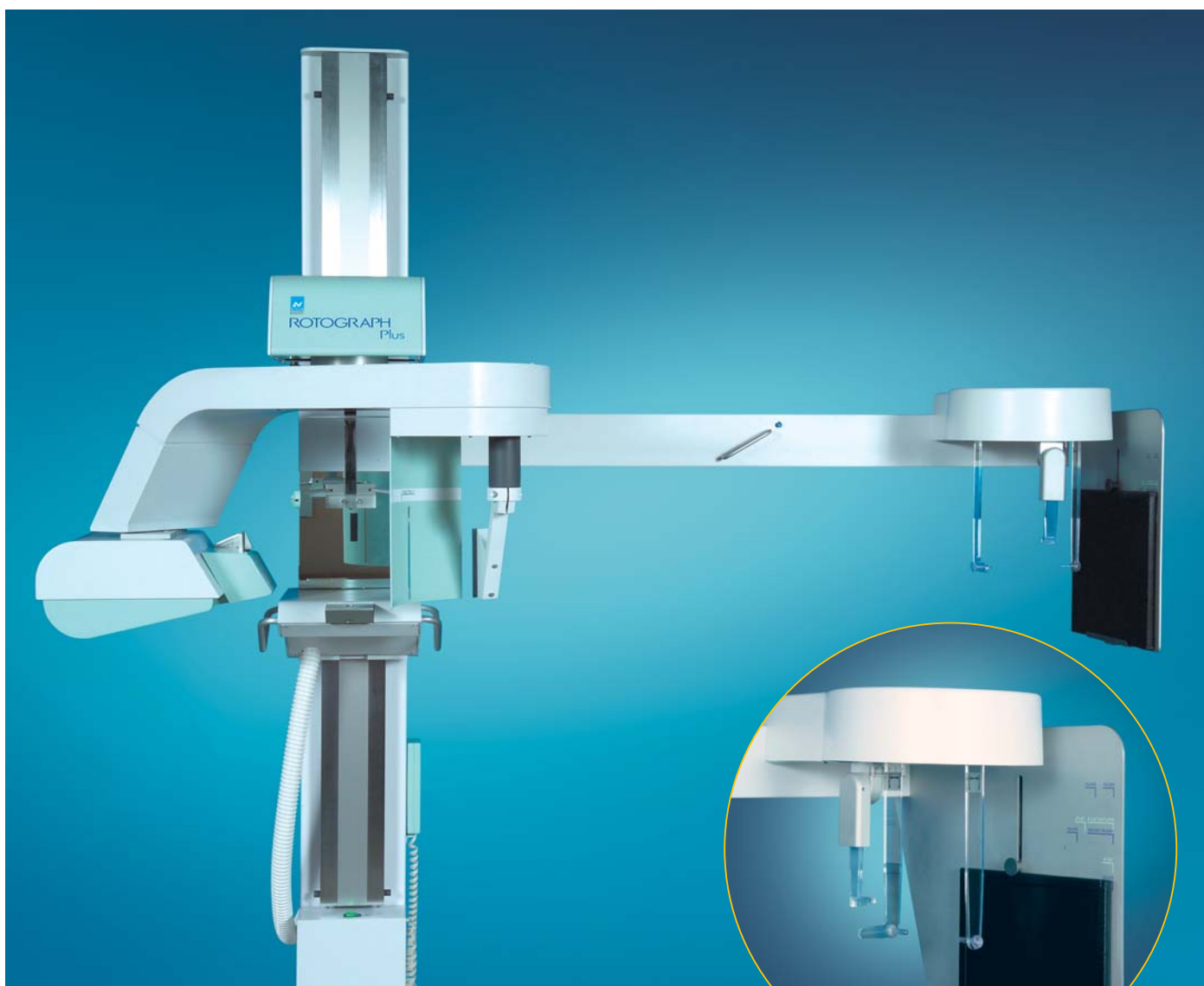
Panoramic

The examination is performed using 15x30cm film size, widely available on the market.

Temporo-Mandibular Joint

Temporo-Mandibular Joint examination can be executed in open/closed mouth modality for functional problem study.





The Rotograph Plus version can be equipped with a cephalometric arm that can be retrofitted in field at any time, to expand applications to the orthodontic field.

Rotograph Plus is also available as "ST" version that provides the best possible price/performance ratio when only the panoramic exam is required. This version is not equipped for the TMJ and ceph exams and cannot be modified.

Cephalometry

Ceph examinations can be performed using films of different sizes and a dedicated soft tissue filter for the enhancement of the patient's contours in the lateral projection.

ROTOGRAPH-D

Efficiency

Direct digital acquisition technology will improve your daily efficiency ensuring a top quality service to your patients.

Exam execution times and related costs will be significantly reduced, making for a quick return on your investment.

Maximum acquisition freedom

Via the high speed USB 2.0 connection, images are transferred in real time during acquisition directly to the PC, allowing an immediate feedback on the exposure accuracy. USB 2.0 ports are present in all recent PCs and there is no need for dedicated image acquisition boards, making it possible to operate Rotograph-D even with an appropriately configured laptop.



Rotograph-D is also equipped with an onboard CompactFlash® card slot that can be used to store images directly on a memory card without the need for a connected PC. Images can then be transferred at your convenience using an appropriate card reader.

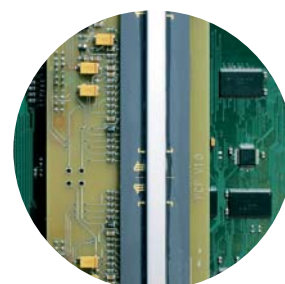
Onboard CompactFlash® card slot.

Flexibility

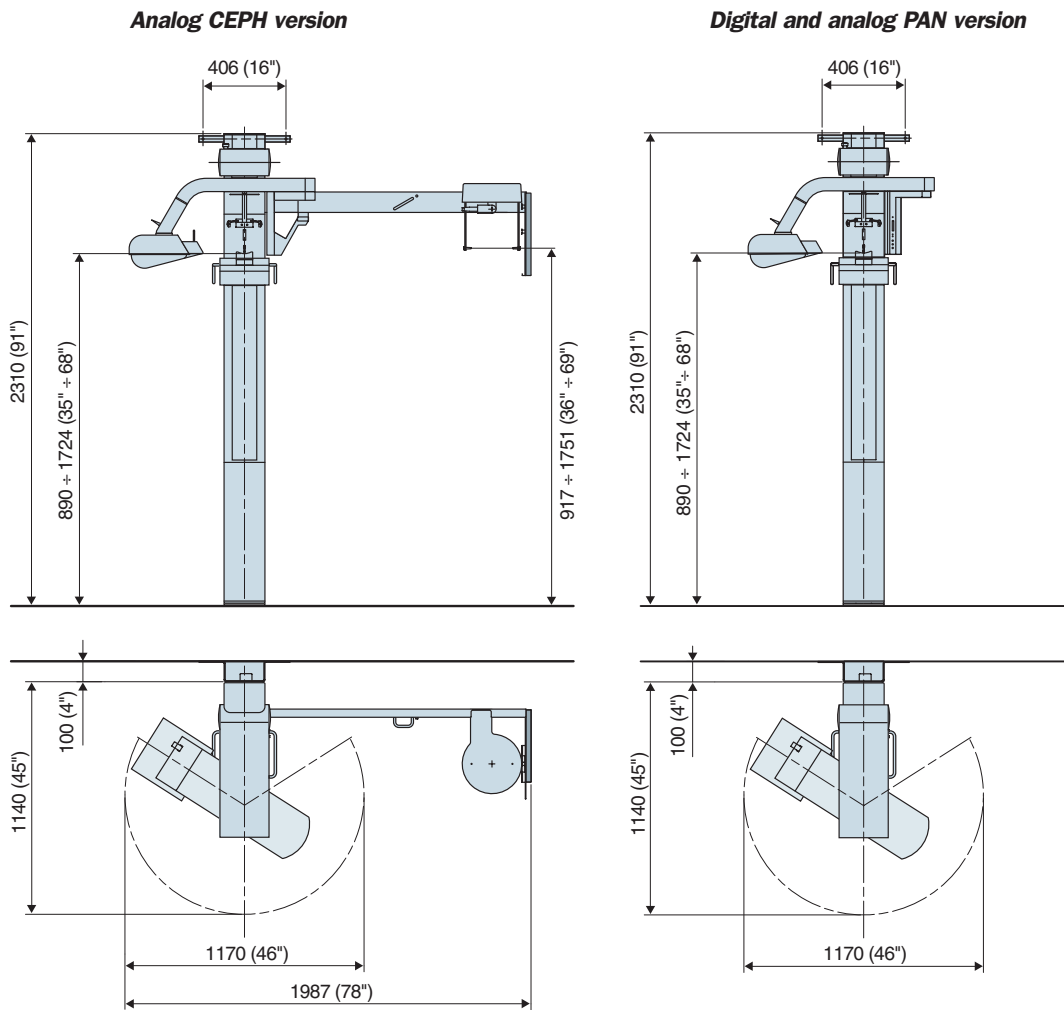
The QuickVision software, supplied with the unit, is a powerful tool to acquire, process, print and store your images in a simple and effective way. Advanced post-processing features also enable you to appropriately enhance your images to get the best diagnostic value out of each exam.

It is also possible to send images to Dicom compatible printers with medical imaging transmission protocol.

A CCD sensor with a CsI (Cesium Iodide) scintillator screen provides high resolution, sharp and clear images of even the finest details.



Technical data



High voltage		60-85 kV, in 5 kV steps
Anode current		10 mA
Focal spot		0.5 mm (IEC 336)
Exposure time	Panoramic	17 sec adult, 14 sec child
	TMJ open/closed mouth	10.4 sec adult, 9.4 sec child
	Ceph	0.2-3sec
Power supply voltage		120/220/230/240 Vac ($\pm 10\%$) single phase, 50/60 Hz
Absorbed current		5 A @ 230 V / 10 A @ 108 V
Power rating		1.15 kVA
Weight	without ceph arm	236 kg
	with ceph arm	260 kg
Rotograph ST		
Available examination		Panoramic adult, panoramic child, sinus
Cassette size	panoramic, sinus	15x30 cm (6"x12"), curved
Rotograph Plus		
Available examination		Panoramic adult, panoramic child, sinus, TMJ open/closed mouth, cephalometry (optional)
Cassette size	panoramic, sinus, TMJ	15x30 cm (6"x12"), curved
	ceph	18x24 and 24x30 cm or 8"x10" and 10"x12" (to be specified at order)
Rotograph-D		
Available examination		Panoramic adult, panoramic child, sinus, TMJ open/closed mouth
Image matrix		1536x2805 pixels in binning modality
CCD sensor resolution		10.4 lp/mm (pixel size 48 μ m)
Grey levels		4096, 12 bits
PC connection		USB 2.0

Villa Sistemi Medicali long-standing experience at the service of our customers



Competence in x-ray systems

Villa Sistemi Medicali specialists can provide qualified information on new x-ray systems, room structure and installation and equipment positioning.

A wide range of equipment

Villa Sistemi Medicali is among the major European manufacturers of radiological systems and offers a wide range of products, such as:

- Digital radiographic and angiographic systems
- Remote controlled tables
- Classical tilting tables
- General rad floating tables
- Chest stands
- Mobile units
- Surgical C arms
- HF Generators
- Dental units, Intra-oral and panoramic

Our priority: Technical Service

A wide network of highly skilled service engineers ensures effective and reliable maintenance of all Villa Sistemi Medicali equipment installed worldwide. Preventive maintenance programs and Service Contracts are adapted to the needs of our customers

Logistic services: a widespread presence

Spare parts, accessories and consumables are shipped daily by Villa Sistemi Medicali to all its customers worldwide.